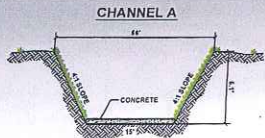
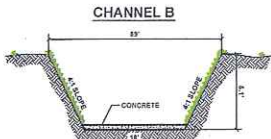


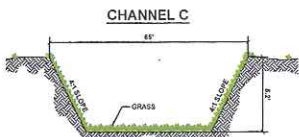
Central Texas Airport
 Colorado River Tributary 8 and 9
 Post-Project
 April 28, 2010



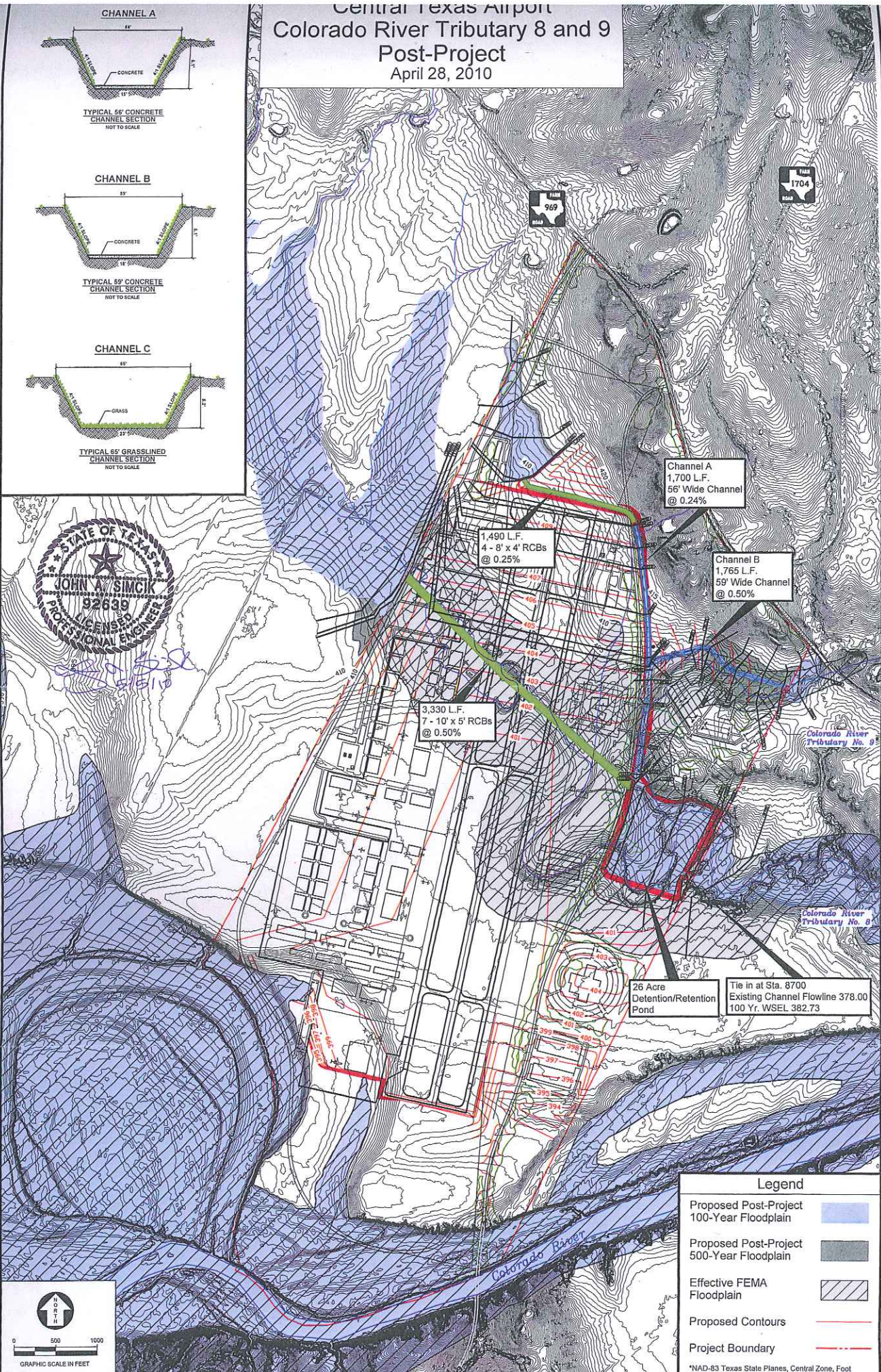
TYPICAL 56' CONCRETE CHANNEL SECTION
 NOT TO SCALE



TYPICAL 59' CONCRETE CHANNEL SECTION
 NOT TO SCALE



TYPICAL 46' GRASSLINED CHANNEL SECTION
 NOT TO SCALE



Channel A
 1,700 L.F.
 56' Wide Channel
 @ 0.24%

Channel B
 1,765 L.F.
 59' Wide Channel
 @ 0.50%

1,490 L.F.
 4 - 8' x 4' RCBs
 @ 0.25%

3,330 L.F.
 7 - 10' x 5' RCBs
 @ 0.50%

26 Acre
 Detention/Retention
 Pond

Tie in at Sta. 8700
 Existing Channel Flowline 378.00
 100 Yr. WSEL 382.73

Legend

- Proposed Post-Project 100-Year Floodplain
- Proposed Post-Project 500-Year Floodplain
- Effective FEMA Floodplain
- Proposed Contours
- Project Boundary

*NAD-83 Texas State Planes, Central Zone, Foot

